

A photograph of a snowy winter landscape with bare trees. A dark, semi-transparent rectangular overlay is positioned on the right side of the image, containing white text. The text is arranged in a hierarchy: a large main title, a horizontal line, and two lines of smaller text below it.

10 DAY TOHOKU INDY PACKAGE

Sample itinerary (10 days/9 nights/9 ski days)

SAMPLE DATES FEB 4-13

PART 1: AOMORI SPRINGS

February 4-6

MOVEMENT



Feb 4

Your bilingual host will pick you up at either AOJ airport or the bullet train station, Shin Aomori train station.

Transfer by private bus to your accommodation at the Rock Wood Hotel.



Feb 5-6

Ski Aomori Springs for 2 days. Aomori Springs is included on the Indy Pass for 2 free ski days.



Feb 6

Check out of accommodation in the morning and ski one final day.

After skiing depart for your second ski base, the Hachimantai mountain hotel via private bus.

ACCOMMODATION

The Rockwood Hotel at Aomori Spring Resort offers 3.5 star deluxe western style accommodation. The lovely hotel offers views to the Sea of Japan in one direction and up to Mount Iwaki and the national park in the other.

All rooms feature en-suite bathrooms and showers. Breakfast is a variety buffet featuring both Western and Japanese options.

All of our accommodation includes hot springs, Wi-Fi and en-suite restrooms.



PART 2: HACHIMANTAI

February 6-9

MOVEMENT



Feb 6

Arrive in Hachimantai after skiing Aomori Springs area by 6-7pm
Get checked into accommodation at the Hachimantai Mountain Hotel



Feb 7-8

Ski Shimokura or Panorama for two days. Both Shimokura and Panorama are included on the Indy pass for 2 free ski days. A shuttle bus can also be arranged to ski the nearby Appi Kogen (not included on Indy). Lift tickets bought separately.



Feb 9

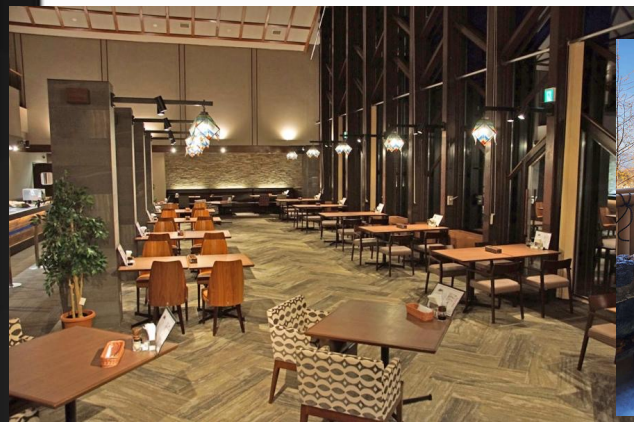
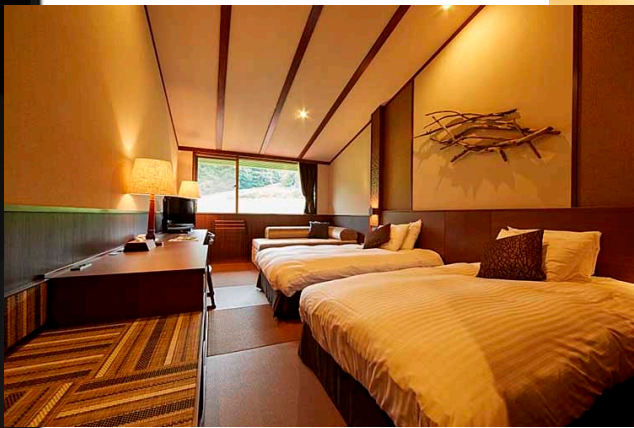
Check out of accommodation in the morning and head to Okunakayama Kogen ski resort (included on Indy Pass).
After skiing at Okunakayama, head to Tazawako ski resort via private bus.

ACCOMMODATION

Nestled at the bottom of Mt. Iwate, this hotel is ski-out to Panorama resort and connected to Shimokura by a 10 minute free shuttle ride.

Located in the skier playground of Hachimantai, Indy Pass holders can ski at Panorama and Shimokura for free, as well as receive discounts on backcountry guiding, Cat skiing and even pop over to Appi Kogen Resort which is connected to this hotel by bus service.

All of our accommodation includes hot springs, Wi-Fi and en-suite restrooms.



PART 3: TAZAWAKO

FEBRUARY 9-11

MOVEMENT



Feb 9

Arrive in Tazawako after skiing Okunakayama Kogen at around 6-7pm
Get checked into accommodation at the Tazawako resort new sky hotel.



Feb 10-11

Ski Tazawako for two days.
Tazawako ski resort is also included on the Indy Pass for two free ski days.



Feb 11

Check out of accommodation in the morning before final ski day in Tazawako.
Depart for Geto Kogen at the end of the day by private bus.

ACCOMMODATION

Located a 5 minute shuttle ride from the Tazawako resort base, and offers a hybrid Japanese/Western fusion accommodation experience.

Rooms incorporate the best elements of both Western and Japanese sensibilities providing a soft landing into the local aesthetic for the uninitiated.

The shuttle to the ski hill is on an "on-demand" basis and is flexible.

All of our accommodation includes hot springs, Wi-Fi and en-suite restrooms.



PART 4: GETO KOGEN

FEBRUARY 11-13

MOVEMENT



Feb 11

After another full day of skiing at Tazawako, head to Geto Kogen, one of the snowiest resorts in Tohoku! For our final two nights, we'll be staying in a Ryokan (Japanese Inn) at the base of Geto Kogen (10 min shuttle to ski resort).



Feb 12-13

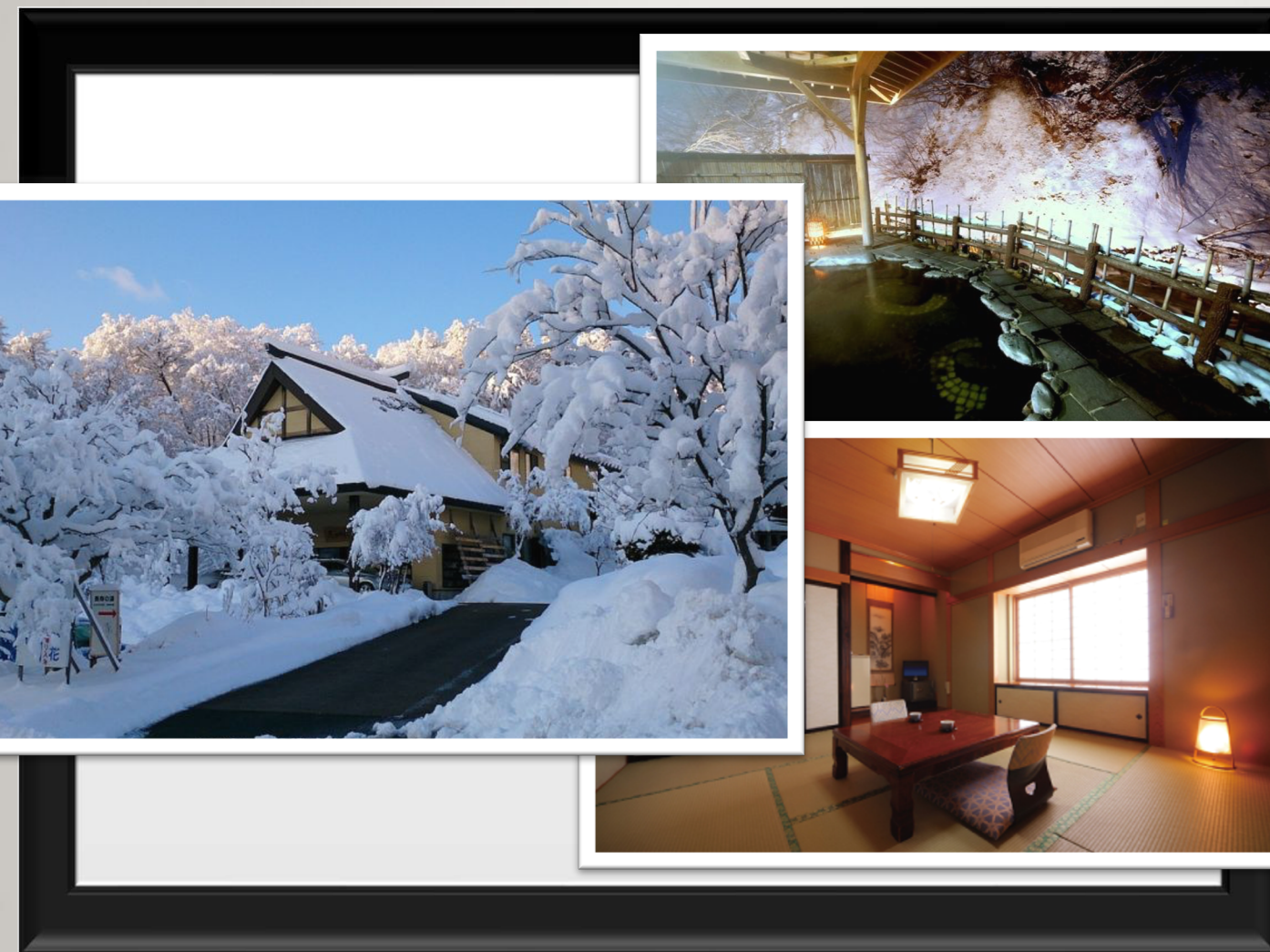
Two ski days at Geto Kogen ski resort. Two free days of skiing are included on the Indy Ski Pass at Geto Kogen.



Feb 13

Check out of accommodation in the morning before final ski day at Geto Kogen.

After skiing a full day, head by private bus to your drop off at Kitakami train station (bullet train stop with access to Tokyo station).



ACCOMMODATION

End your trip by staying in a Ryokan--a traditional Japanese Inn. This Ryokan boasts 3 different hot springs inside the hotel; each offering their own respective health benefits.

All food prepared at this Ryokan is locally sourced authentic Japanese cuisine, as well as options for the less adventurously inclined!

Rooms have private toilets and sinks; bathing facilities are shared.

This Ryokan is located a 10 minute shuttle bus ride to Geto Kogen. The shuttle is free and runs a regular schedule.

FOOD

Our breakfast and dinner options will cover everything from traditional Japanese multi course Ryokan meals, to a combination of Western and Japanese buffets. There are a number of different dinner options to choose from at each accommodation, including high grade Japanese beef, shabu shabu, sushi etc.

Japanese and western style breakfasts will be available and with the exception of Semi Onsen (final 2 days), all hotels will serve a buffet breakfast.



PRICING

TOHOKU PRIVATE TRIP

10 days/9 nights/9 ski days/4 bases



FULL PRICE

For a group of 12~15 pax

¥310,000 per person

+10% Japan sales tax per person

2023 SKI TRIPS SECURED
WITH A ¥40,000 (≈\$350)
DEPOSIT, FULLY
REFUNDABLE UNTIL AUGUST
31, 2022

10% EARLYBIRD DISCOUNT
UNTIL AUGUST 31

*With the Early Bird discount, the price per person is ¥279,000 + 10% tax.

TRIP INCLUSIONS



SKI RELATED

- 9 days of skiing at resorts included on the Indy Pass



LOGISTICS

- Pick up at Shin Aomori train station or Aomori airport and transfer to accommodation by private bus
- Door to door ski area transfers in private bus
- Transfers to ski resort each day, when hotel is not ski in/ski out
- Drop off at Kitakami train station by private bus
- Bilingual host for the first day as part of your orientation



LODGING

- 9 nights of Hotel or Ryokan accommodation
- 4 nights of ski in/ski out accommodation
- Onsite onsen at all accommodations.



FOOD

- Daily breakfasts and dinners. This will be 9 breakfasts and 9 dinners.
- With the exception of Semi Onsen, breakfasts will all be buffet style, with choice of western and Japanese cuisine.

NOT INCLUDED



- All International and Domestic flights



- Ski rentals: Powder ski rentals are available, but in limited stock at each ski resort.
- Lift tickets are not included, as the assumption is that each guest will carry the Indy Pass and ski for free



Transportation from Tokyo to Shin Aomori by bullet train “shinkansen”



- Lunches, snacks and drinks

ALTERNATIVE ADD ONS



SKI RELATED

- Add a day of cat skiing at Hachimantai Cat Ski. Additional fees apply. (advanced noticed required)
- Hire a ski guide for off piste skiing at any of the ski resorts (advanced notice required)